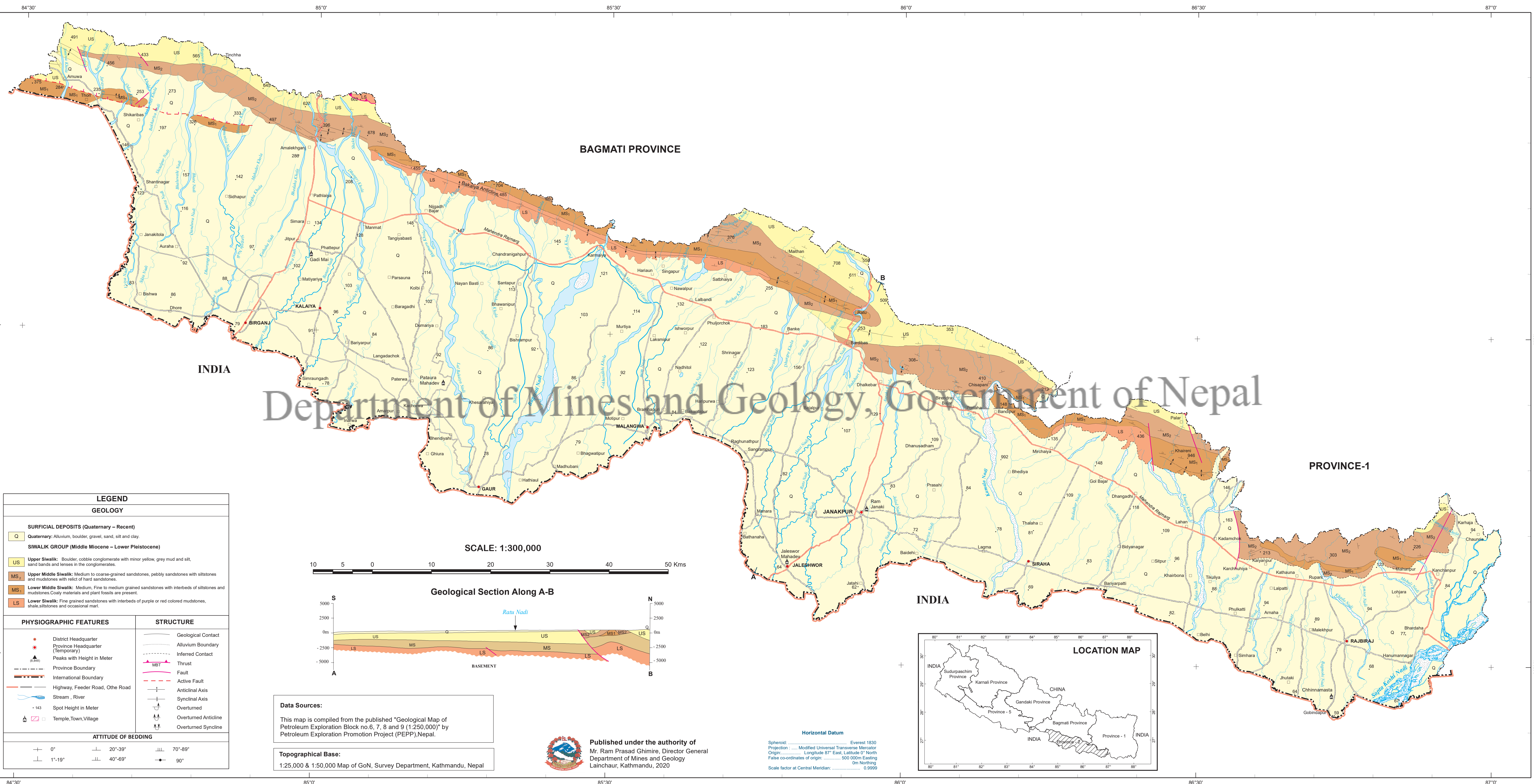


GEOLOGICAL MAP OF PROVINCE - 2, NEPAL



LEGEND

GEOLOGY

SURFICIAL DEPOSITS (Quaternary – Recent)

Q Quaternary: Alluvium, boulder, gravel, sand, silt and clay.

SIWALIK GROUP (Middle Miocene – Lower Pleistocene)

US Upper Siwalik: Boulder, cobble conglomerate with minor yellow, grey mud and silt, sand bands and lenses in the conglomerates.

MS₂ Upper Middle Siwalik: Medium to coarse-grained sandstones, pebbly sandstones with siltstones and mudstones with relic of hard sandstones.

MS₁ Lower Middle Siwalik: Medium, fine to medium grained sandstones with interbeds of siltstones and mudstones. Coaly materials and plant fossils are present.

LS Lower Siwalik: Fine grained sandstones with interbeds of purple or red colored mudstones, shale, siltstones and occasional marl.

PHYSIOGRAPHIC FEATURES

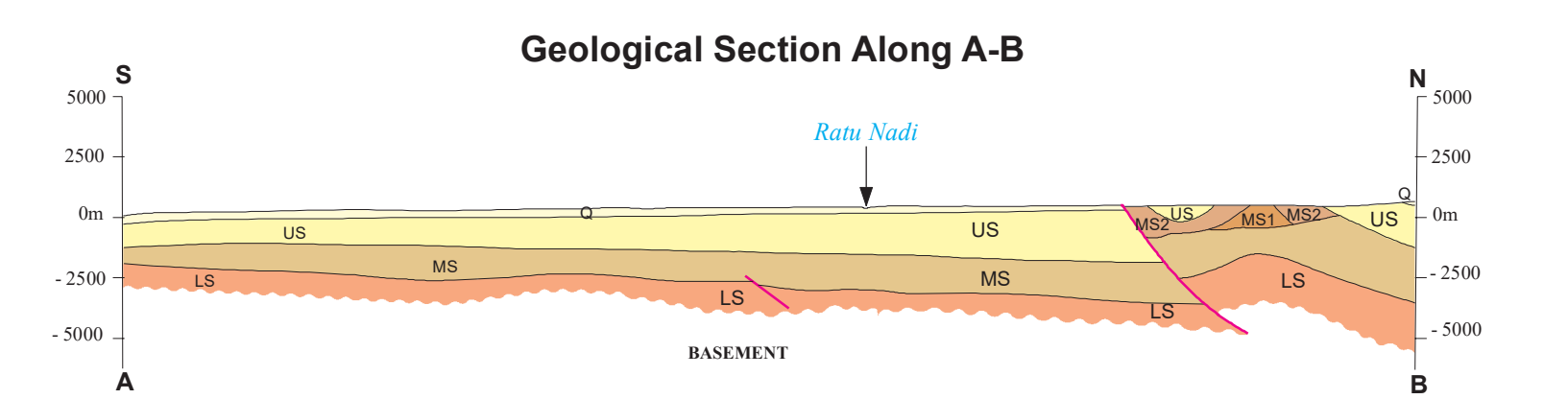
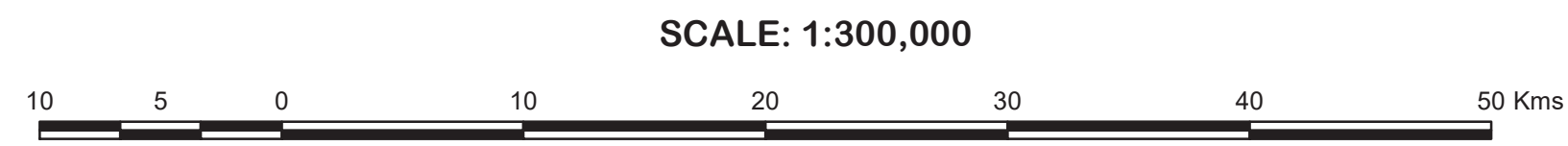
- District Headquarter
- Province Headquarter (Temporary)
- Peaks with Height in Meter
- Province Boundary
- International Boundary
- Highway, Feeder Road, Othe Road
- Stream, River
- Spot Height in Meter
- Temple, Town, Village

STRUCTURE

- Geological Contact
- Alluvium Boundary
- Inferred Contact
- Thrust
- MBT
- Fault
- Active Fault
- Anticlinal Axis
- Synclinal Axis
- Overtured
- Overtured Anticline
- Overtured Syncline

ATTITUDE OF BEDDING

0°	20°-39°	70°-89°
1°-19°	40°-69°	90°



Data Sources:

This map is compiled from the published "Geological Map of Petroleum Exploration Block no.6, 7, 8 and 9 (1:250,000)" by Petroleum Exploration Promotion Project (PEPP), Nepal.

Topographical Base:

1:25,000 & 1:50,000 Map of GoN, Survey Department, Kathmandu, Nepal

Published under the authority of
 Mr. Ram Prasad Ghimire, Director General
 Department of Mines and Geology
 Lainchaur, Kathmandu, 2020

Horizontal Datum

Spheroid: Everest 1830
 Projection: Modified Universal Transverse Mercator
 Origin: Longitude 87° East, Latitude 0° North
 False co-ordinates of origin: 500 000m Easting
 0m Northing
 Scale factor at Central Meridian: 0.9999

